

Video Server

ACD-2100

Ver. 070206

Quick Installation Guide



www.acti.com

1

Getting Started

1.1 PACKAGE CONTENTS

ACD-2100



Power Adaptor (Option)



Product CD



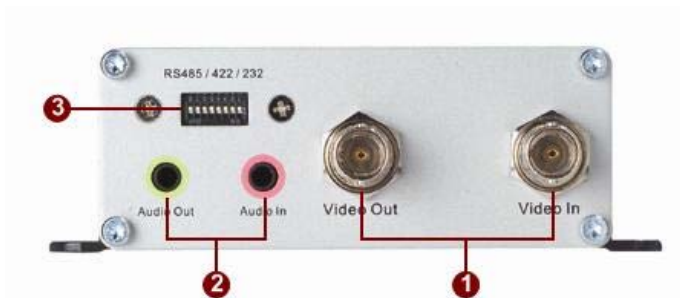
Terminal Blocks & Screws



Warranty Card



1.2 PHYSICAL DESCRIPTION



1. Video Input / Output

The IP device supports one analog video input and output of composite signal with BNC connectors

2. Audio Input / Output

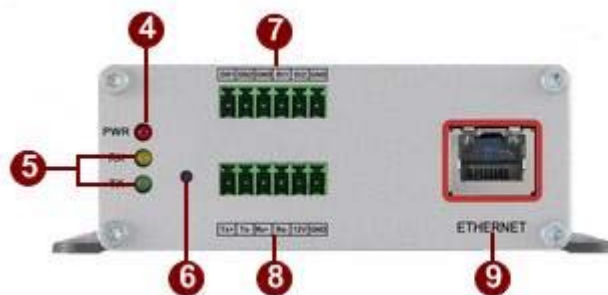
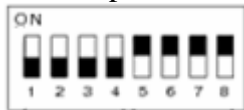
The IP device supports one audio input and output with earphone jack

3. Dip Switch for Serial Port

RS-485 or RS-422 pin define (default is RS-485)



RS-232 pin define



4. Action LED Indicator

The LED will light up after IP device has successfully completed the boot process.

5. Serial Port LED Indicator

LEDs indicating when serial port is active.

6. Reset Button

Step 1: Switch off IP device by disconnecting the power cable

Step 2: Using a suitable pointed object, press and continue to hold the Reset Button depressed. While continuing to hold the reset button depressed, reconnect the power cable.

Step 3: Keep holding the reset button depressed around 6 seconds, release the reset button. The unit will start up with factory default settings.

7. Terminal Blocks Pin 1~6

The IP device supports two alarm input and two alarm output.

DI: Logic Level 0: 0~0.4V; Logic Level 1: 3.3~30V

DO: Logic Level 0: 0.1~0.6V; Logic Level1: 2.4~5V

Please find Support package” TS-00045” for details.

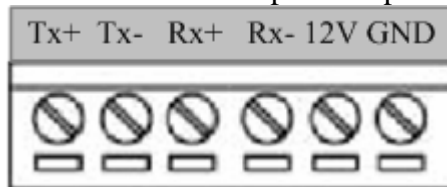


PIN	NAME	DESCRIPTION
1	DO1	Digital Output 1
2	DO2	Digital Output 2
3	GND	Ground Pin
4	DI1	Digital Input 1
5	DI2	Digital Input 2
6	GND	Ground Pin

8. Terminal Blocks Pin 7~12

Pin 7~10: RS232/422/485. Default mode is RS-485

Pin 11~12: DC 12V power input



PIN	NAME	DESCRIPTION		
		RS-485	RS-422	RS-232
7	Tx+	D+	Tx+	Tx
8	Tx-	D-	Tx-	

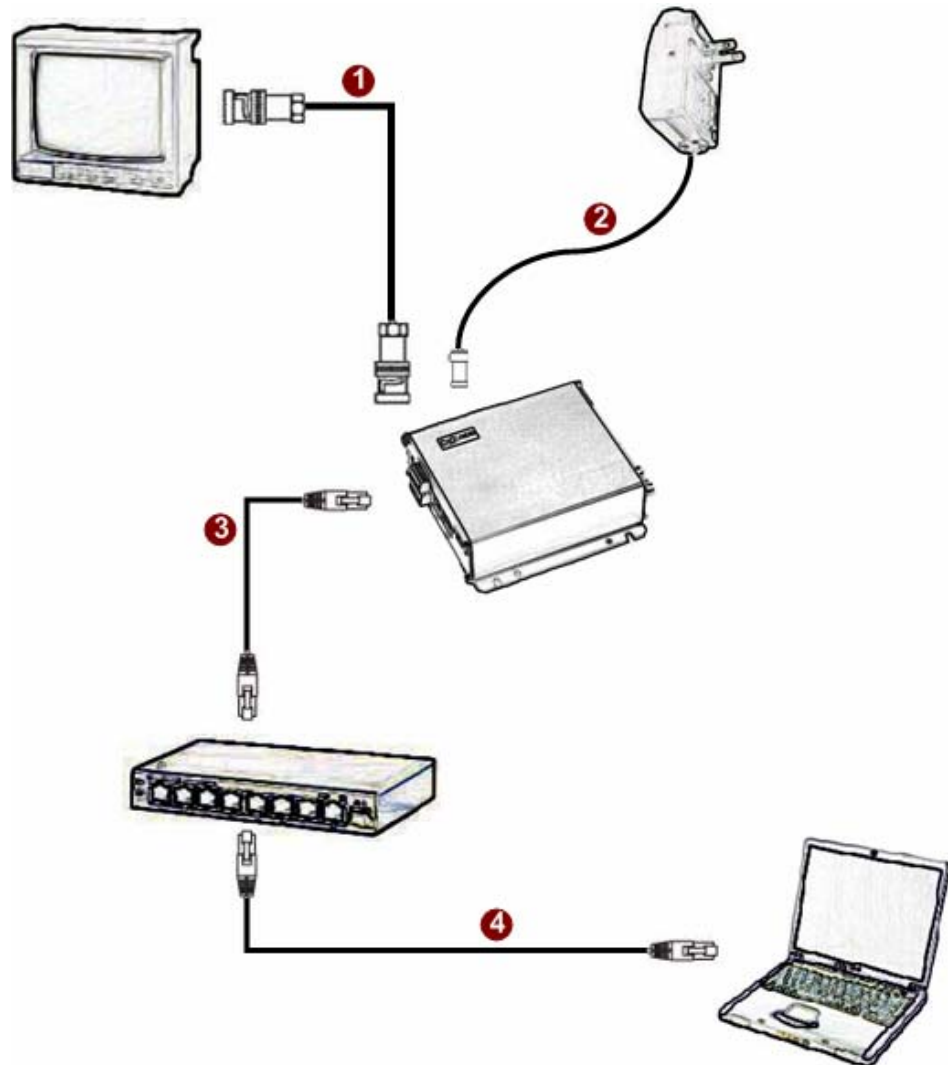
9	Rx+	Rx+	Rx
10	Rx-	Rx-	
11	12V	Power Input (DC +12V)	
12	GND	Ground Pin of Power Input & RS-232	

9. Ethernet Port

The IP device connects to the Ethernet via a standard RJ45 connector. Supporting NWAY, this IP device can auto detect the speed of local network segment (10Base-T/100Base-TX Ethernet).

1.3 BASIC CONNECTIONS

Follow the procedures below to connect the IP device to the respective apparatuses.



1. Connect an analog monitor to IP device video out (BNC connector).
2. Connect the power adaptor to IP device
3. Connect IP device's ethernet port to an Ethernet (RJ45 connectors). If your IP device has PoE built-in, you can regard it as a PD and connect it directly to a PSE device like PoE switch.

4. Connect a PC to the Ethernet hub (RJ45 connectors)



NOTE: You may find a support package for help you getting familiar with PoE. Please visit our web site, and get the support document TS-00040.

2

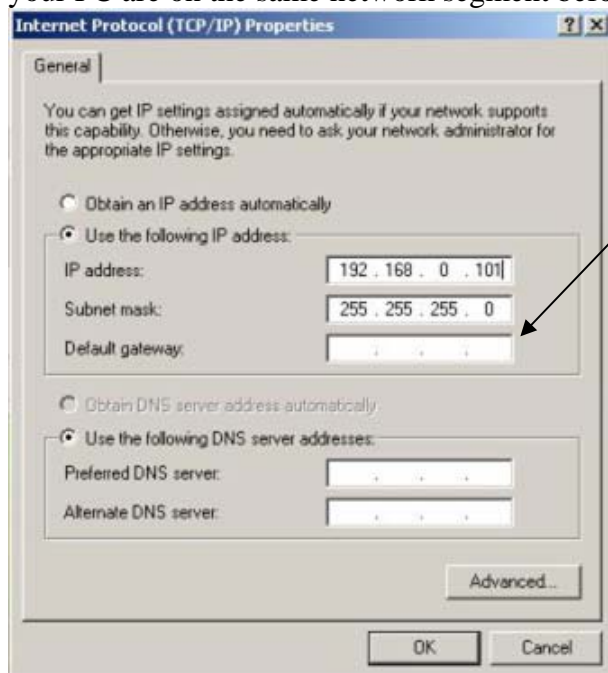
Quick Tour

This section guides you with a quick tour on this IP device.

2.1 Configure this IP Device

2.1.1 Make sure network environment

Default IP of this IP device is 192.168.0.100. Please make sure this IP device and your PC are on the same network segment before running the installation.

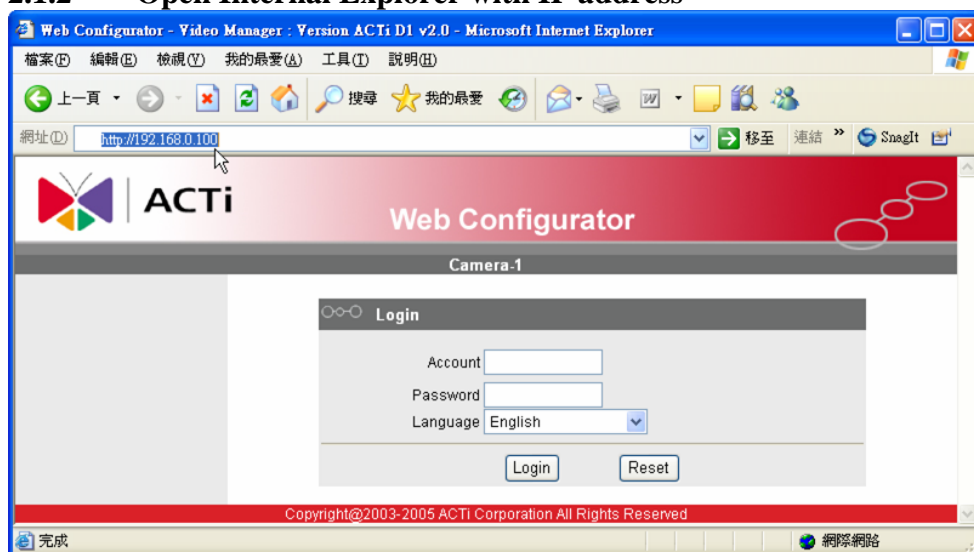


Please set the settings as below.

IP address: 192.168. 0.xxx
Subnet mask: 255.255.255. 0

(NOTE: xxx should be a number from 1 to 254, but 100 is excepted.)

2.1.2 Open Internal Explorer with IP address

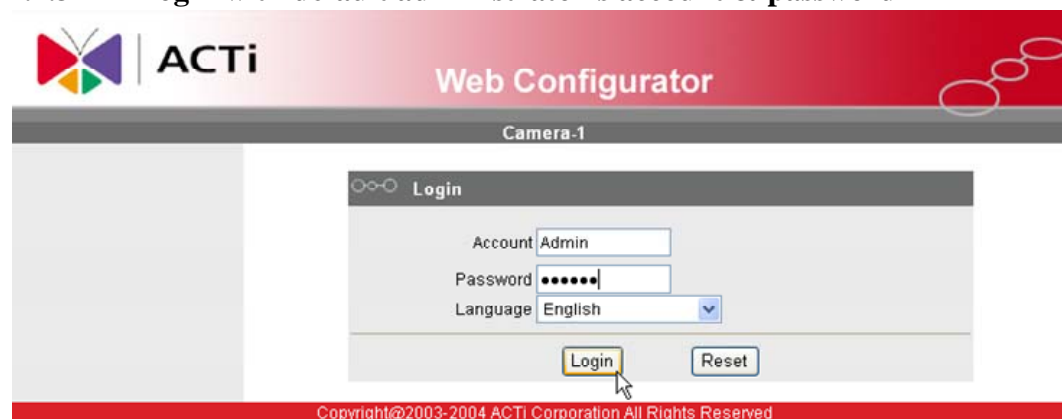


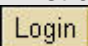
NOTE: If your web browser is earlier than IE6, then download IE6 is recommended.



NOTE: This IP device default IP address is set to 192.168.0.100

2.1.3 Login with default administrator's account & password

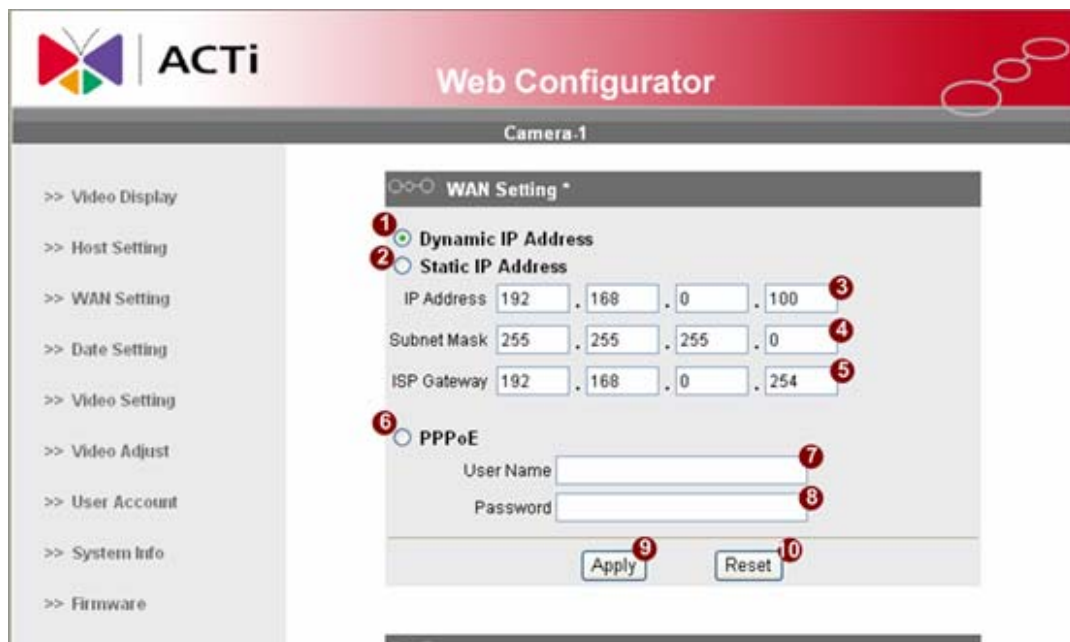


NOTE: Default administrator account is set to **Admin**, password is set to **123456**, and click  button.

2.1.4 Preview the video





2.1.5 Set the new IP address



***IP Address** : The default IP address is 192.168.0.100.



***Subnet Mask** : The default subnet mask is 255.255.255.0

***Click**  button

	NOTE: In your Client PC, please make sure the setting of Network Connections Type is set to Auto Negotiation, since this IP device follows MII standard. Otherwise, you might not see the live image.
	IMPORTANT: After the IP address is changed, please record this IP address. There's no way to connect to the IP device if user forgets the new IP address.

2.1.6 Check Default Video Setting



 **NOTE:** Please make sure the TV Input (NTSC / PAL) is meet your requirement, and click  button.

2.1.7 Click **Save Reboot** to restore all settings and please wait about 30 seconds for system reboot.