



16 CH Video Server
ACD-2400
Quick Installation Guide

Ver.080331



www.acti.com

1

Getting Started

1.1 PACKAGE CONTENTS

ACD-2400



Warranty Card



Software CD



Terminal Blocks



Power Cord



Bracket



1.2 PHYSICAL DESCRIPTION



1. **Channel Number**
2. **Action LED Indicator**

The LED will light up after this video channel has successfully completed the boot process.
3. **LAN LED Indicator**

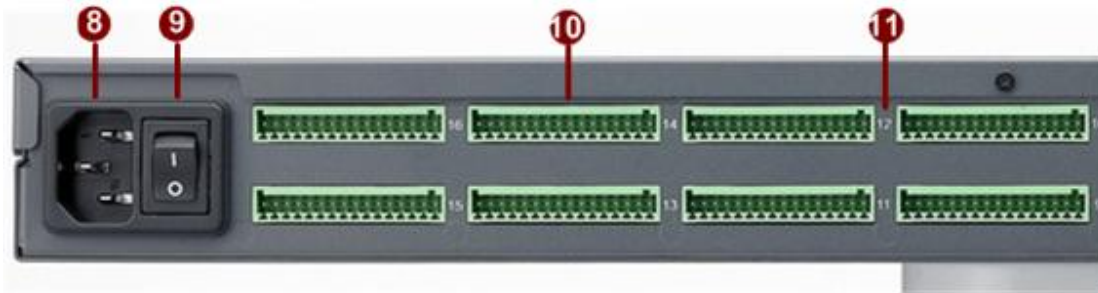
The LEDs indicating when this video channel is transmitting data.
4. **Serial Port LED Indicator**

LEDs indicating when serial port is active.
5. **Video Input**

Each channel supports one analog video input of composite signal with BNC connector
6. **Reset Button**

Step 1: Switch off video server by disconnecting the power cable
Step 2: Using a suitable pointed object, press and continue to hold the Reset Button depressed. While continuing to hold the reset button depressed, reconnect the power cable.
Step 3: Keep holding the reset button depressed around 6 seconds, release the reset button. The unit will start up with factory default settings.
7. **ETHERNET Port**

The Video server connects to the Ethernet via a standard RJ45 connector. Supporting NWAY, this Video server can auto detect the speed of local network segment (10Base-T/100Base-TX Ethernet). The Ethernet port is for FTTH and can connect to a xDSL or cable modem.



8. AC Power Input

100-240V AC 50/60Hz Power Input.

9. Power Switch

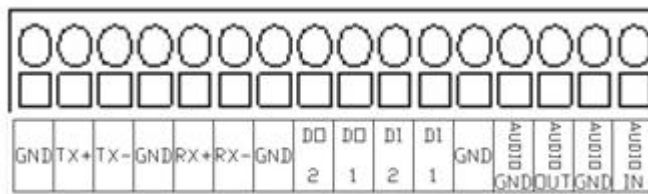
Video Server power switch.

10. Terminal Blocks

The video server supports two alarm input and two alarm output.

DI: Logic Level 0: 0~0.4V; Logic Level 1: 3.3~30V

DO: Logic Level 0: 0.1~0.6V; Logic Level 1: 2.4~5V



PIN	NAME	DESCRIPTION		
		RS-485	RS-422	RS-232*
1	GND	Ground Pin		
2	Tx+	D+	Tx+	Tx
3	Tx-	D-	Tx-	
4	GND	Ground Pin		
5	Rx+		Rx+	Rx
6	Rx-		Rx-	
7	GND	Ground Pin		
8	DO2	Digital Output 2		
9	DO1	Digital Output 1		
10	DI2	Digital Input 2		
11	DI1	Digital Input 1		
12	GND	Ground Pin		
13	AUDIO GND	Audio Ground Pin		

14	AUDIO OUT	Audio Output
15	AUDIO GND	Audio Ground Pin
14	AUDIO IN	Audio Input

* RS-232 mode requires user to set the jumpers inside the video server.

Because opening the video server will void the warranty, please contact your distributor for how to switch to RS-232 mode.

11. Channel Number

2

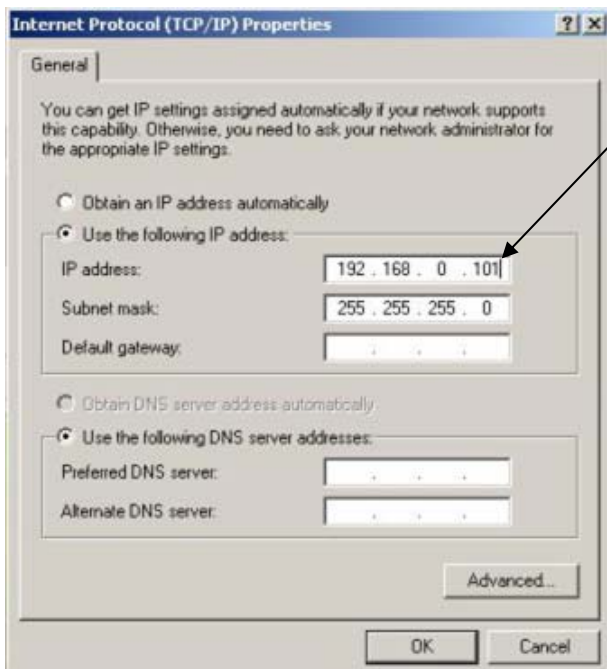
Quick Tour

This section guides you with a quick tour on video server.

2.1 Configure the Video Server

2.1.1 Make sure network environment

Default IP of video server is 192.168.0.100. Please make sure video server and your PC are on the same network segment before running the installation.



Please set the settings as below.

IP address: 192.168. 0.xxx
Subnet mask: 255.255.255. 0

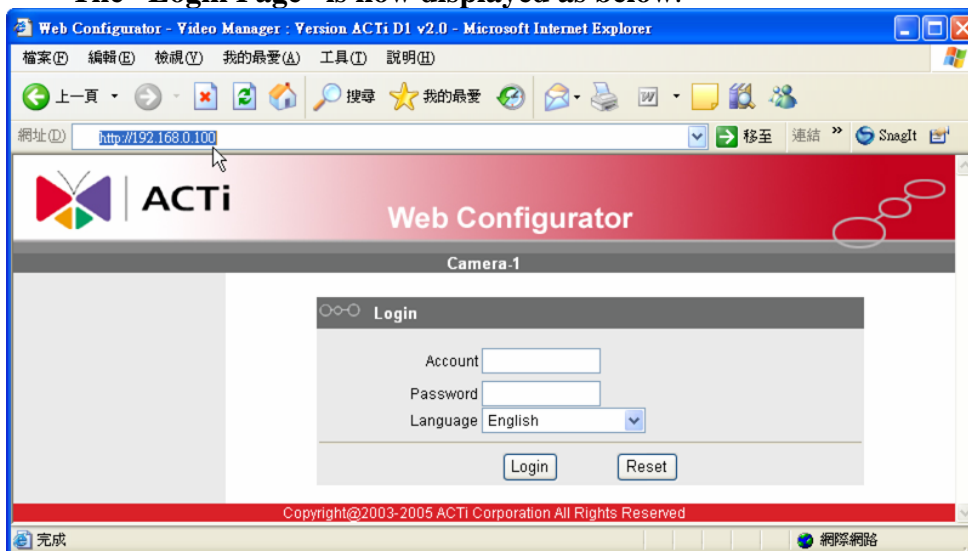
(**NOTE:** xxx should be a number from 1 to 254, but 100 is excepted.)

2.1.2 Open Internet Explorer with IP address

- **STEP1:** Open a browser
- **STEP2:** Enter the IP address of the IP device.

The default IP address is “192.168.0.100”

The “Login Page” is now displayed as below.



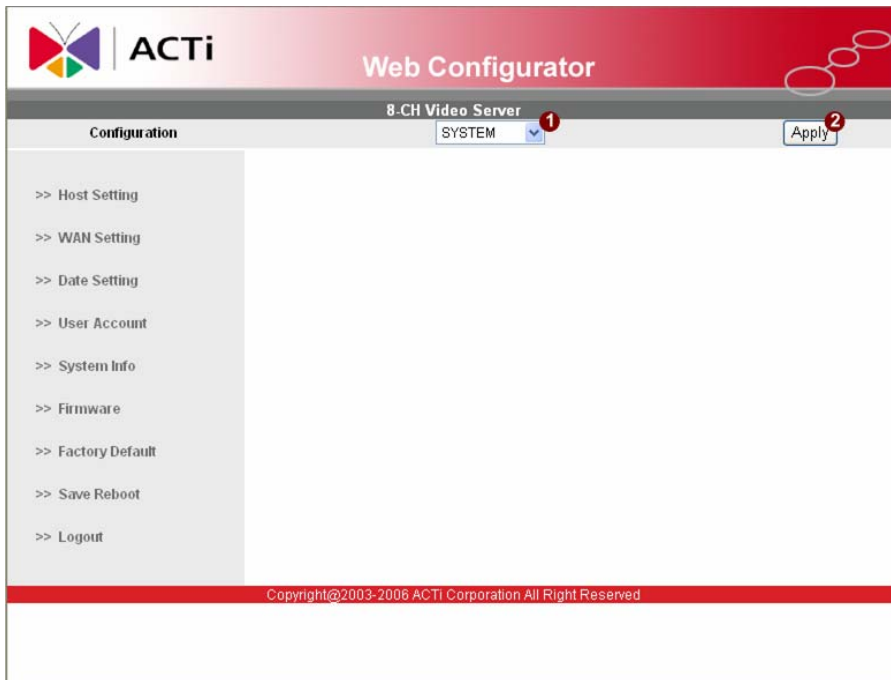
- **STEP3:** Enter the Account name (factory default: Admin) and the Password (factory default: 123456).



NOTE: Internet Explorer of 6.0 or above is highly recommended. If you don't have the it, please download it from <http://www.microsoft.com/windows/ie/downloads/default.msp>

- **STEP4:** Select the language of the IP device user interface. You can select from English, Traditional Chinese, Simplified Chinese, Japanese, Spanish, Italian, German, Portuguese, Czech and French. This user interface setting will disappear once you log out, if you want to change the default user interface language, please change the setting of [Host setting] after login succeeded.
- **STEP5:** Click the **Login** button to login or click the **Reset** button to re-enter again.

Once successfully login, the “Main Setup page” will be displayed as below.



- **STEP1:** Click **1** to set system configurations of 4-CH Video Server
- **STEP2:** Click **2** to apply the choice

2.1.3 Set New IP

Click the [WAN Setting] on the “Main Setup page”. The “WAN setting page” is displayed as below.

ACTi Web Configurator
8.CH Video Server
Configuration SYSTEM Apply

WAN Setting

Dynamic IP Address
 Static IP Address

IP Address 192 . 168 . 0 . 100
Subnet Mask 255 . 255 . 255 . 0
ISP Gateway 192 . 168 . 0 . 254

PPPoE

User Name
Password

Apply Reset

Multicast Setting

Multicast IP 228 . 5 . 7 . 1
Multicast TTL 255
*IGMP Disable

Apply Reset

DNS Server Setting

Primary DNS Server
Secondary DNS Server

Apply Reset

DDNS Server Setting

DDNS Type Disable
Service ISP members.dyndns.org
Host Name
User Name
Password

Apply Reset

Copyright©2003-2006 ACTi Corporation All Right Reserved

***IP Address** : The IP address of the LAN interface. The default IP address is 192.168.0.100.

***Subnet Mask** : The subnet mask of the LAN interface. The default subnet mask is 255.255.255.0

***Click**  button



NOTE: Check with your MIS department, if Client PC and IP rugged dome are setting in different VLANs, please connect to WAN port.



NOTE: In your Client PC, please make sure the setting of Network Connections Type is set to Auto Negotiation, since IP rugged dome follows MII standard. Otherwise, you might not see the live image.

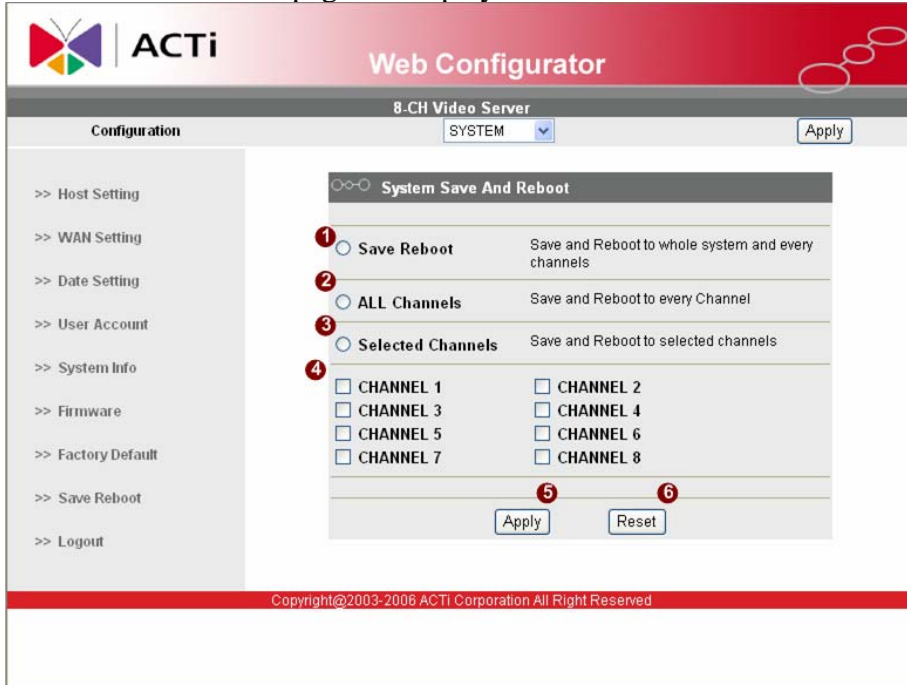


IMPORTANT: After the IP address is changed, please record this IP address. There is no way to connect to the IP rugged dome if user forgets the new IP address.

2.1.4 Save Reboot

- **STEP1:** Click the [Save and reboot] on the “Main Setup page”.

The “Save and reboot page” is displayed as below.



- **STEP2:** The Action LED indicator will light down to indicate that the IP device is rebooting. After around 30 seconds, the Action LED will light up again to indicate that the reboot is completed.

2.1.5 Configuring the IP device – Channel

This section describes how to configure the system part of IP device.

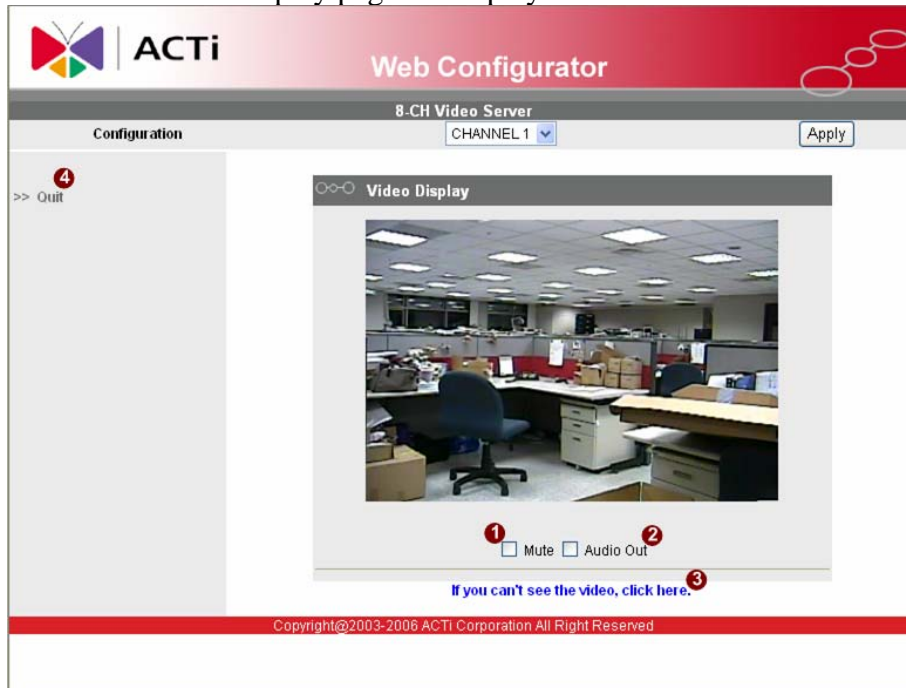


- **STEP1:** Click **1** to set configurations of every single channel of 4-CH Video Server
- **STEP2:** Click **2** to apply the choice

2.1.6 Preview the video

- **STEP1:** Click the [Video Display] on the “Main Setup page”.

The “Video Display page” is displayed as below.

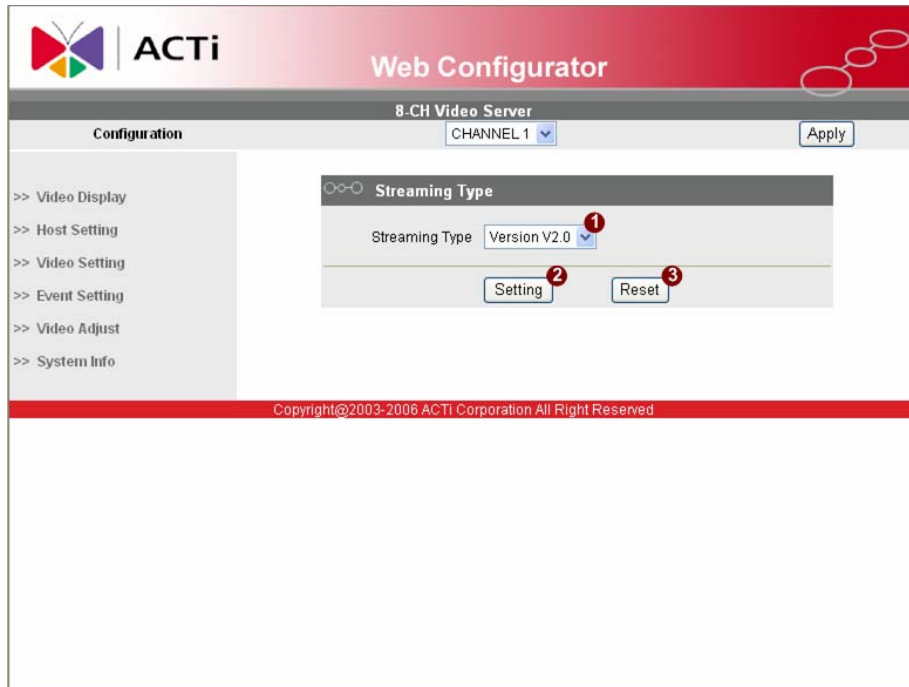


- **STEP2:** Check the **1** [Mute] checkbox to select mute enable/disable
- **STEP3:** Click the **2** [Audio Out] checkbox to enable/disable audio output from control PC to IP device.
- **STEP4:** Click the **3** if you cannot see the video, and follow the instructions.
- **STEP5:** Click the **4** [Quit] to exit the live view and return to “Main Setup page”.

2.1.7 Check Default Video Setting

- **STEP1:** Click the [Video Setting] on the “Main Setup page”.

The “Video setting page” is displayed as below.



- **STEP2:** Click **2** to enter the configuration table.

Click the **13** [Apply] button of each setting to confirm the settings or click the **14** [Reset] button to re-enter the parameters.

 **NOTE:** Please make sure the TV Input (NTSC / PAL) is meet your requirement, and click **Apply** button.