



**Megapixel IP Mini Dome  
ACM-370x series**

**Ver. 090518**

**Quick Installation Guide**



[www.acti.com](http://www.acti.com)



## 1.2 PHYSICAL DESCRIPTION



### 1. **Ethernet Indicator LED**

The LED will indicate ethernet speed and active states after IP camera has connected completely.

### 2. **Power LED**

The LED will light up after IP camera has successfully completed the boot process

### 3. **Reset Button**

**Step 1:** Switch off IP device by disconnecting the power cable

**Step 2:** Press and continue to hold the Reset Button. Reconnect the power cable while continuing to hold the reset button.

**Step 3:** Keep holding the reset button depressed around 16 seconds, release the reset button. The unit will start up with factory default settings.

Model	ACM-3701	ACM-3703
Picture		
Type	Rugged RJ-45 Connector	Rugged M12 Connector

#### 4. **Ethernet Port**

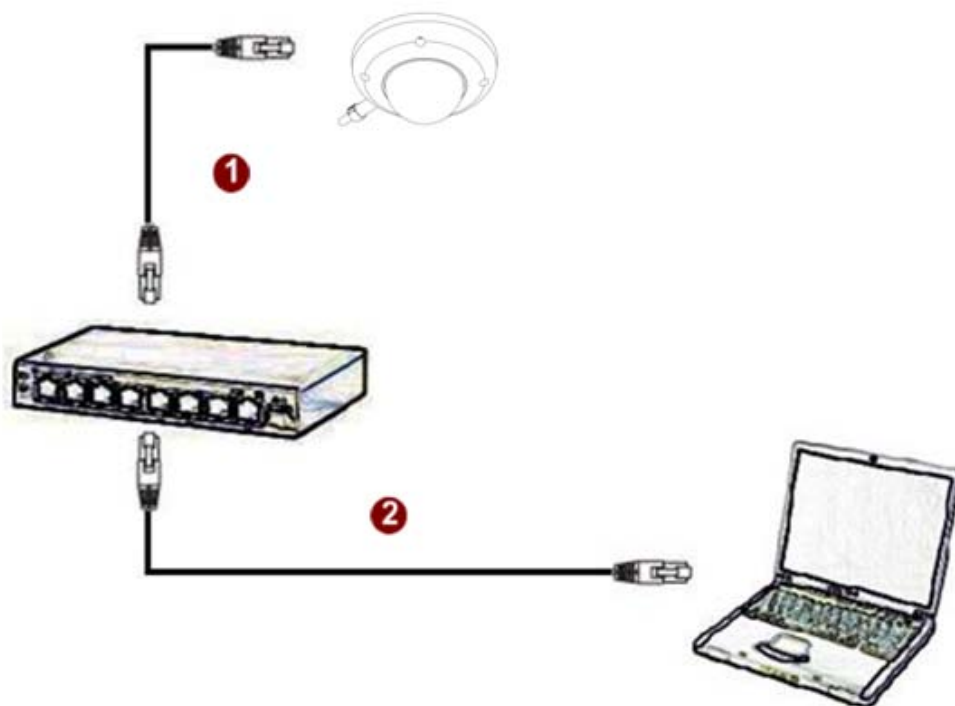
The IP device connects to the Ethernet via a female RJ-45 industrial connector(ACM-3701) or a male M12 D-code Ethernet connector(ACM-3703)

The Ethernet port supporting Power over Ethernet.

Supporting NWAY, this IP device can auto detect the speed of local network segment (10Base-T/100Base-TX Ethernet).

## 1.3 BASIC CONNECTIONS

Follow the procedures below to connect the IP device to the respective apparatuses.



1. Connect this IP device's ethernet port to an Ethernet (RJ45/ M12 connector). IP device has only PoE built-in, you must regard it as a PD and connect it directly to a PSE device like PoE switch.
2. Connect a PC to the Ethernet hub

2



**NOTE:** You may find a support package for help you getting familiar with PoE. Please visit our web site, and get the support document TS-00040.

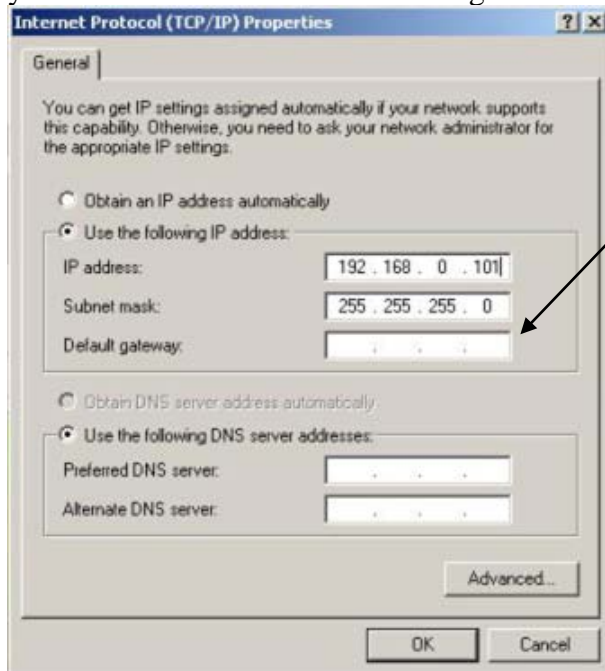
## Quick Tour

This section guides you with a quick tour on this IP device.

## 2.1 Configure this IP Device

### 2.1.1 Make sure network environment

Default IP of this IP device is 192.168.0.100. Please make sure this IP device and your PC are on the same network segment before running the installation.

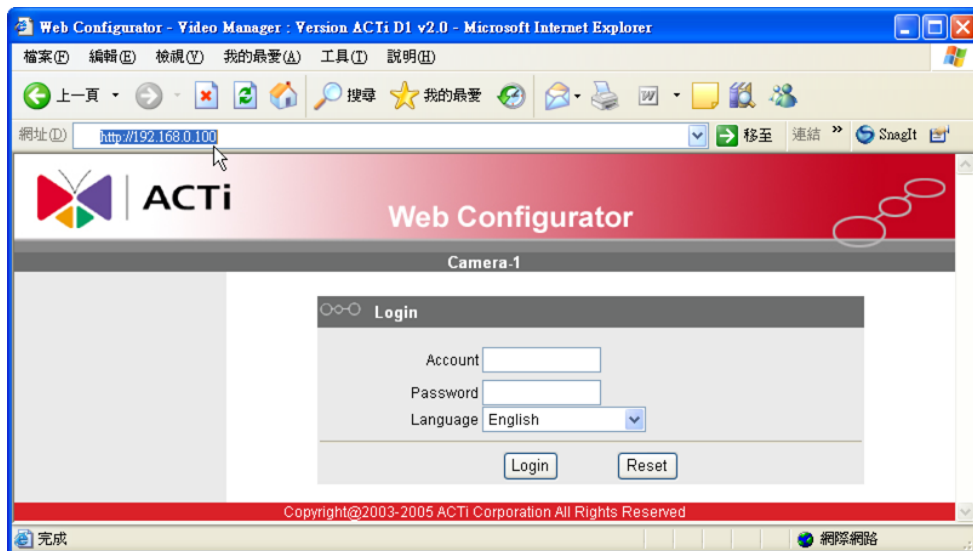


Please set the settings as below.

IP address: 192.168.0.xxx  
Subnet mask: 255.255.255.0

(NOTE: xxx should be a number from 1 to 254, but 100 is excepted.)

### 2.1.2 Open Internal Explorer with IP address

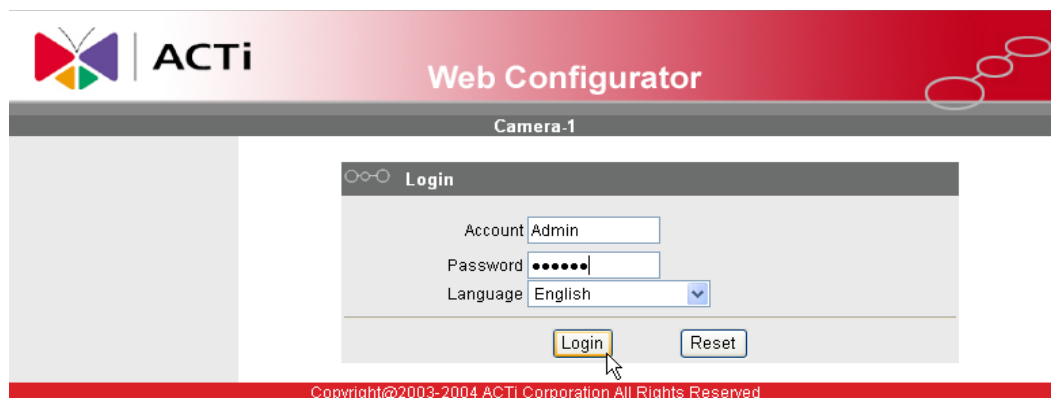



**NOTE:** If your web browser is earlier than IE6, then download IE6 is recommended.



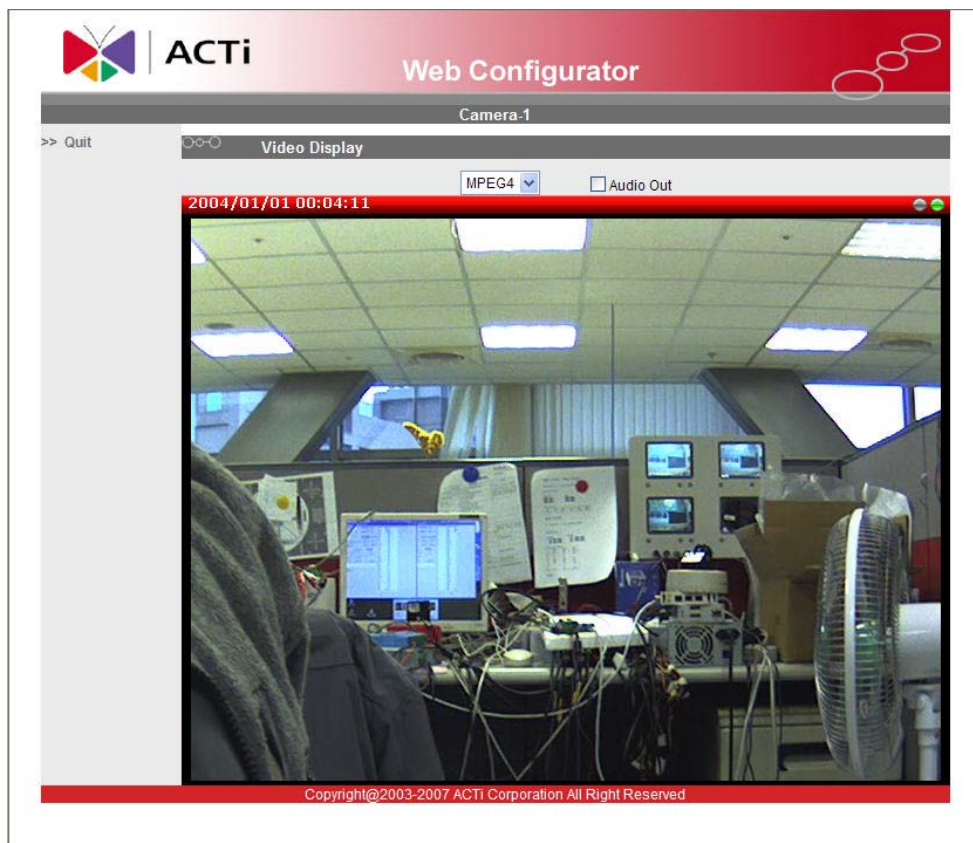
**NOTE:** This IP device default IP address is set to 192.168.0.100

### 2.1.3 Login with default administrator's account & password



**NOTE:** Default administrator account is set to **Admin**, password is set to **123456**, and click  button.

### 2.1.4 Preview the video






### 2.1.5 Set the new IP address



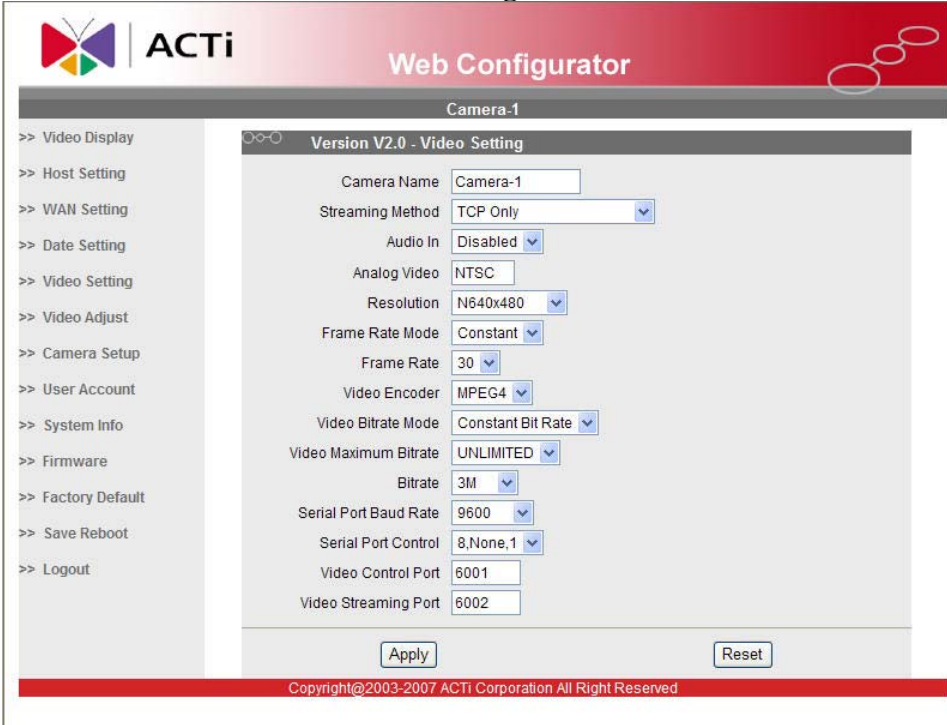
\*IP Address : The default IP address is 192.168.0.100.

\***Subnet Mask** : The default subnet mask is 255.255.255.0

\*Click  button

	<b>NOTE:</b> In your Client PC, please make sure the setting of Network Connections Type is set to Auto Negotiation, since this IP device follows MII standard. Otherwise, you might not see the live image.
	<b>IMPORTANT:</b> After the IP address is changed, please record this IP address. There's no way to connect to the IP device if user forgets the new IP address.

### 2.1.6 Check Default Video Setting



The screenshot displays the ACTi Web Configurator interface for 'Camera-1'. The main content area is titled 'Version V2.0 - Video Setting' and contains the following configuration options:

- Camera Name: Camera-1
- Streaming Method: TCP Only
- Audio In: Disabled
- Analog Video: NTSC
- Resolution: N640x480
- Frame Rate Mode: Constant
- Frame Rate: 30
- Video Encoder: MPEG4
- Video Bitrate Mode: Constant Bit Rate
- Video Maximum Bitrate: UNLIMITED
- Bitrate: 3M
- Serial Port Baud Rate: 9600
- Serial Port Control: 8,None,1
- Video Control Port: 6001
- Video Streaming Port: 6002

At the bottom of the configuration area, there are 'Apply' and 'Reset' buttons. The footer of the interface reads 'Copyright©2003-2007 ACTI Corporation All Right Reserved'.

2.1.7 Click **Save Reboot** to restore all settings and please wait about 30 seconds for system reboot.