

Protech DVR (Integration)

Quick Installation Guide

Ver 12.12.0

Digital Video Security System
Digital Video Recorder

Protech

*All contents of this document may change without prior notice, and actual product appearance may differ from depicted herein.

Index

1. Driver Installation					2
.....					
1-1.		32-Bit		Installation	2
.....					
1-2.	Windows	7	64-Bit	Installation	4
.....					
2.		Program		Installation	6
.....					
3. Configuration					7
.....					
3-1.		Create		Volume	7
.....					
3-2.	System Setup				8
.....					
3-3.		Camera		Setup	8
.....					
3-4.	Run	Protech	DVR	Program	8
.....					

Introduction

Quick Installation Guide describes the initial installation procedure. This procedure is briefly segmented into 3 steps.

1. Install driver (Software).
2. Install Protech DVR software.
3. Configure settings to run the Protech DVR Main Program.

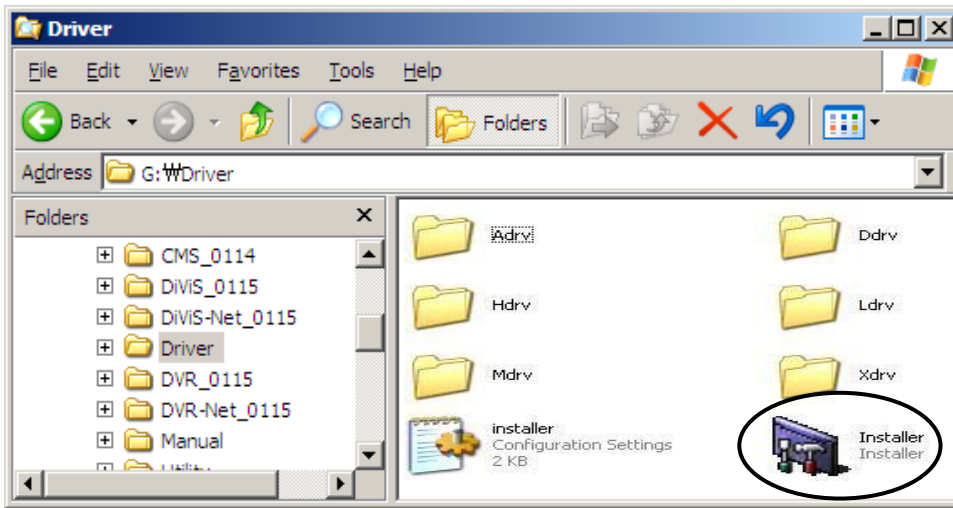
For more detailed configuration and explanation, please refer to “Installation and User’s Guide”.

1. Driver Installation

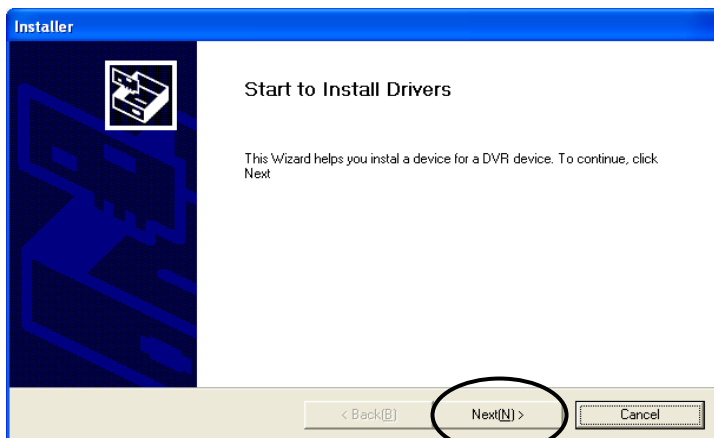
1-1. 32-Bit Installation



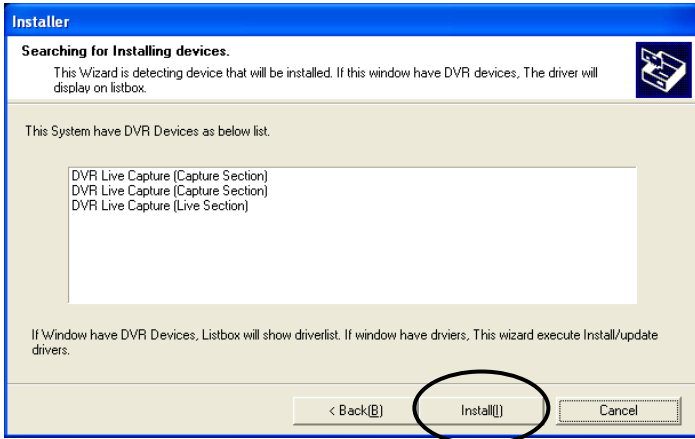
Drivers for CAP, ACAP, LIVCAP, H.264 can be installed by “installer.exe”, which determines DVR model and installs proper Driver. When Hardware Wizard message shows up before the installation, click “Cancel” to manually install the driver.



Open the “Driver” folder from the CD and run “Installer”.



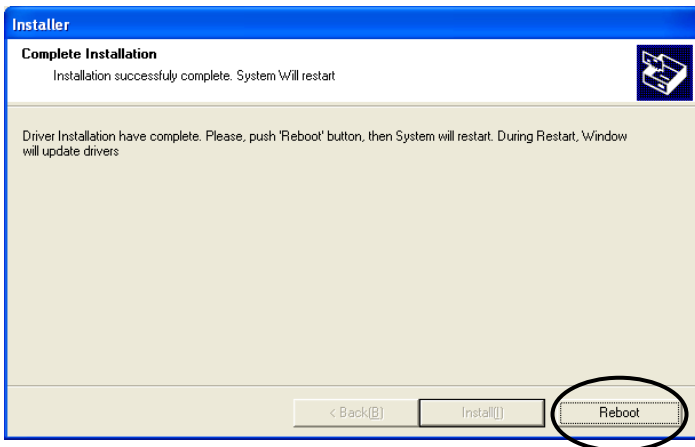
Click “Next”.



The following is the list of all the devices based on the model.

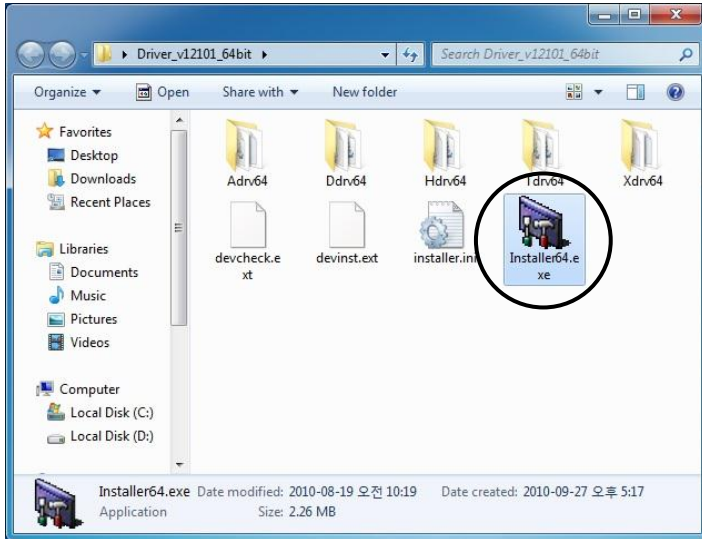
Model	Device List
CAP series	DVR Capture
LIVCAP series	DVR Live Capture
ACAP series	DVR ACapture Device
H.264 series	Live H264 D1 Capture Device v1.1
	Live H264 Capture Device v1.4

Click "Install".

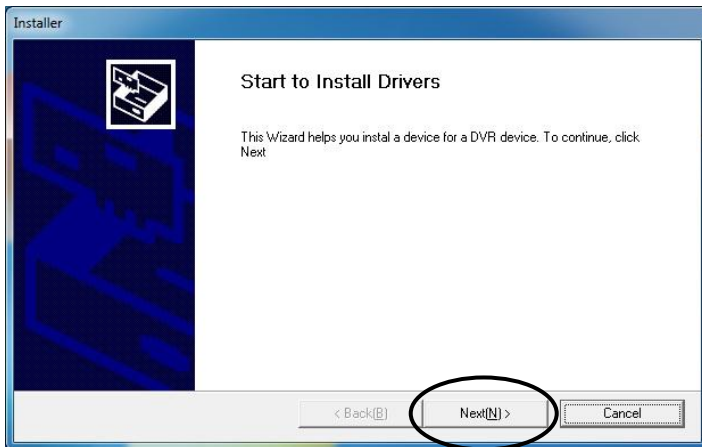


Click "Reboot" to restart the system and complete the installation process.

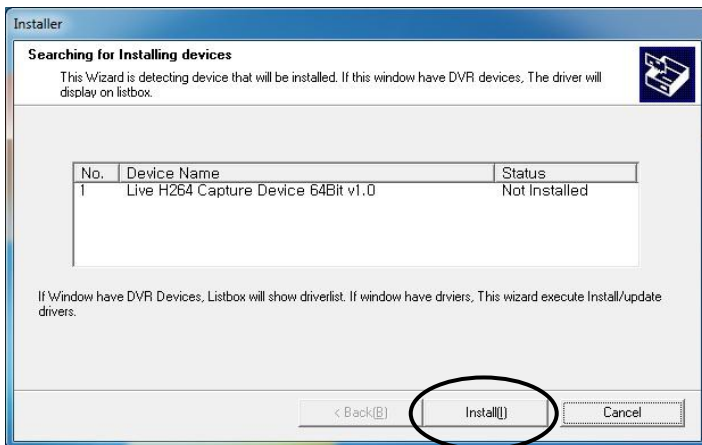
1-2. Windows 7 64-Bit Installation



Open the "Driver" folder from the CD and run "Installer64.exe".



Click "Next".

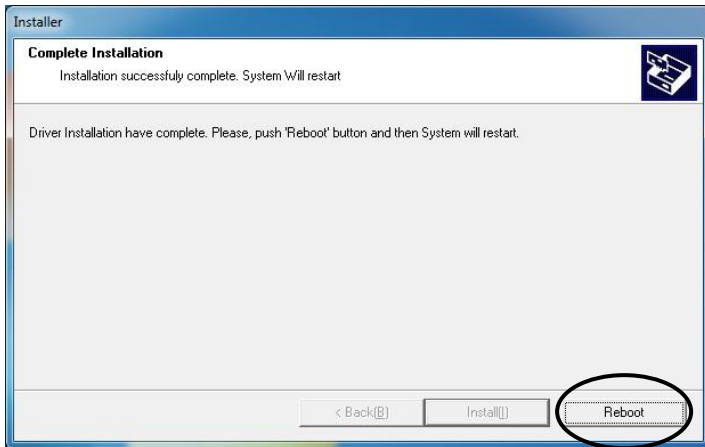


Click "Install".

The following is the list of all the devices based on the model.

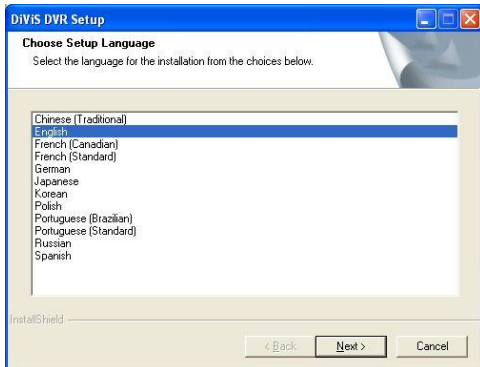
Model	Device List
ACAP Series	DVR ACapture Device 64Bit
H.264 Series	Live H.264 D1 Capture Device 64Bit
	Live H264 Capture Device 64Bit

- CAP, and LIVCAP Series are not supported in Windows 7 64-bit..



Click "Reboot" to restart the system and complete the installation process.

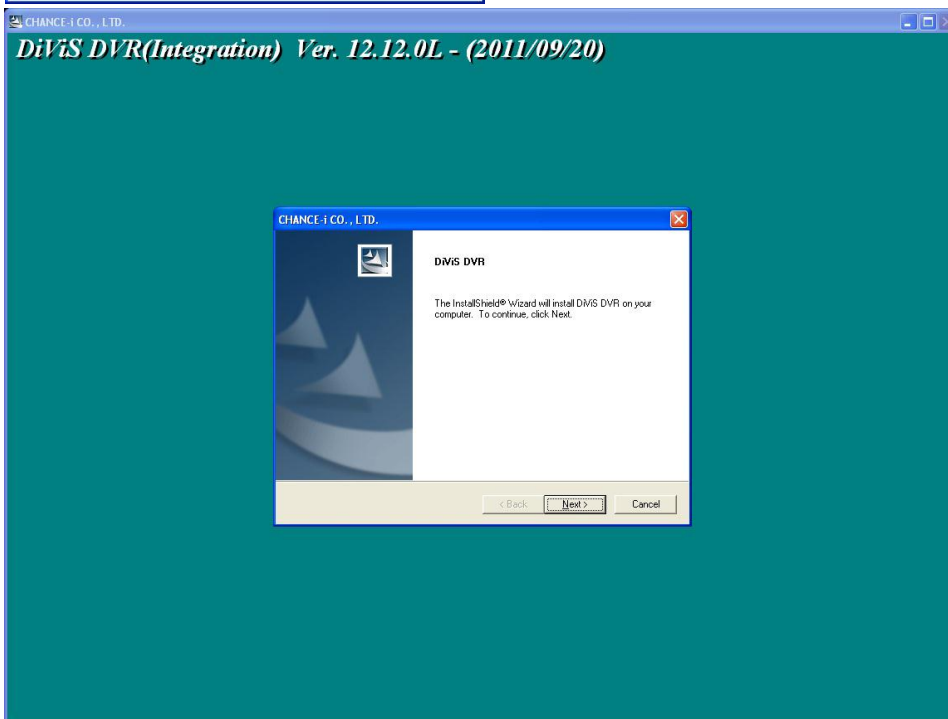
2. Program Installation



Run "Setup.exe".

(Choose the language for the software to be installed.)

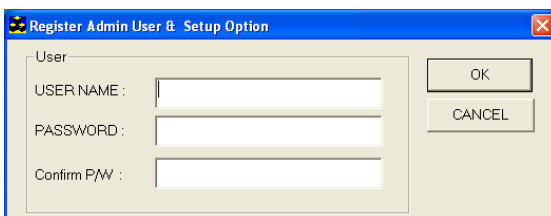
Click "Next".



Choose the proper media format (NTSC or PAL) and continue by clicking "Next."

The last letter of version indicates the type of board.

i.e.) CAP – C, LIVCAP – L, ACAP – A, HE D1 – DH, H.264 – H



• **USER NAME:** Enter username for Top Admin.

• **PASSWORD:** Enter password for Top Admin.

• **Confirm P/W:** Confirm the password.

Note: Once the Top Admin user created, it cannot be modified from User Admin Setup. To change user name or password for Top Admin user, please refer to Appendix 1.DVR Management on Installation and User's Guide.

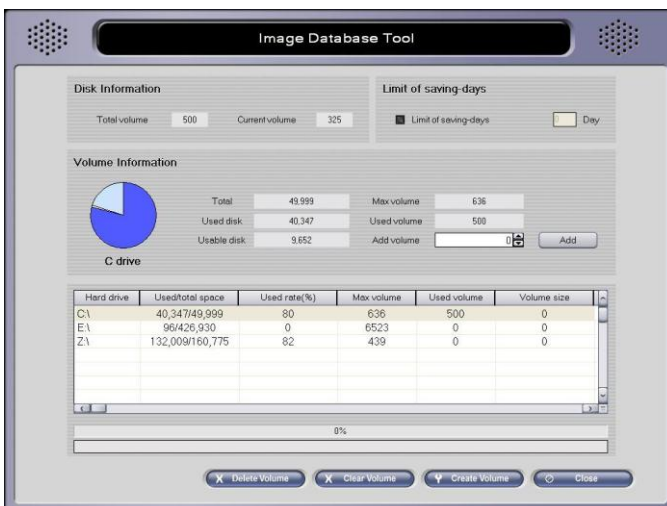
Once the installation is complete, restart the system to allow the settings to take effect.

3. Configuration

Run Protech DVR Setting.



3-1. Create Volume



Click “Disk tool”, to open the Image Database Tool settings.

Highlight the desired Hard Disk Drive (HDD) from the HDD list on the bottom half of the screen and enter in a number of volumes to assign from the HDD to Protech DVR system in the “Add Volume” section and click “Add.” After making sure the correct number of desired volumes appears under the “Volume Size” column of the HDD list, click “Create Volume” to finalize the allocation process.

Note: Leave at least 5 to 10 volumes from the maximum volume allowed (shown in Max Volume column).

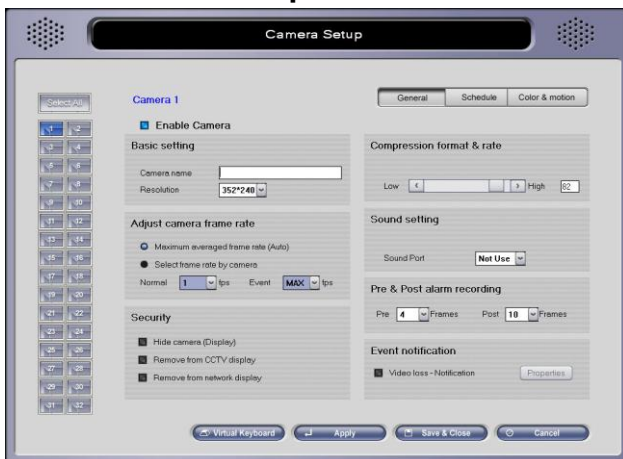
What is a Volume? Volume is the unit used by the Protech DB system. 1 volume is equivalent to **64MB** of physical HD space. All image data is recorded in volume units. When assigned Volumes are full, the program will continue recording by overwriting volumes that contain the oldest previously recorded data. It is recommended that important data be backed up prior to the start of the overwriting process.

3-2. System Setup



- **Initial screen:** Number of camera shots that will be displayed when Protech DVR Main is loaded
- **Auto Startup:** Enable automatic startup of Protech DVR Main Program upon system start.

3-3. Camera Setup



- **Enable Camera:** Enable/disable camera. (Camera channel 1 is always enabled.)

3-4. Run Protech DVR Program



Click on “DVR Main” Icon, located on Windows screen. Refer to the Installation and User’s Guide for detailed configuration of Protech DVR program.