

Protech DVR

PDA Installation and User Guide

Ver 12

Digital Video Security System
Digital Video Recorder

*All contents of this document may change without prior notice.

Index

1. Prerequisite	3
2. PDA Net Installation	4
3. PDA Net Connection and Login	8
4. PDA Net Screen configuration & Description	13
4.1 Live Monitoring	13
4.2 Searching	14

Á
Á
Á
Á



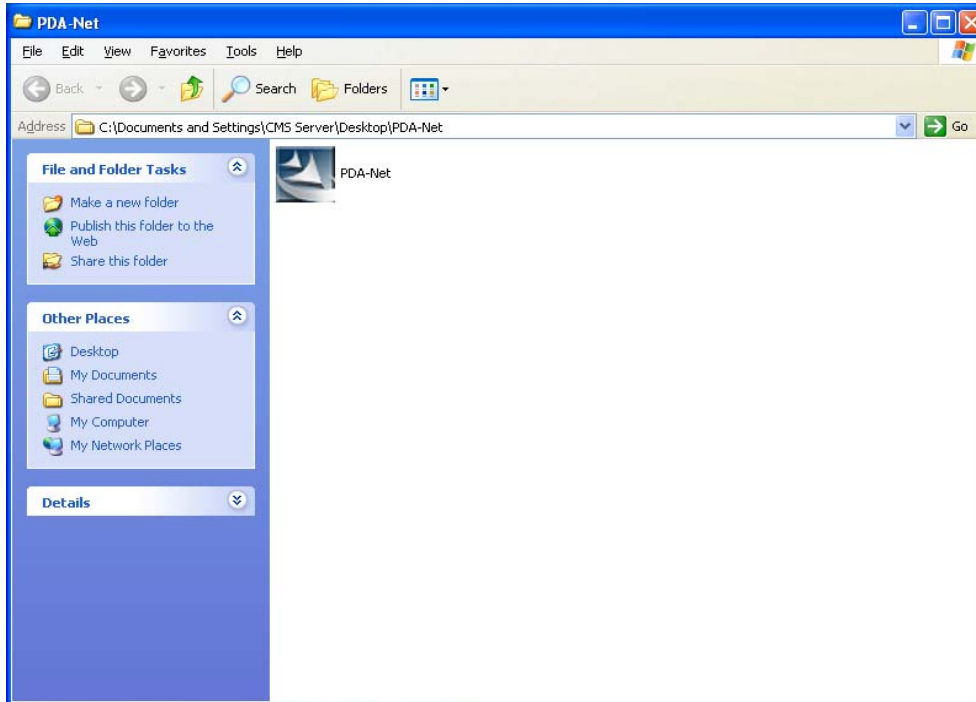
1. Prerequisite

PDA Net is compatible with most devices that have Microsoft Windows based operating system. Due to the variety of hardware configuration of devices, the compatibility of PDA-Net software may be limited and cannot be guaranteed

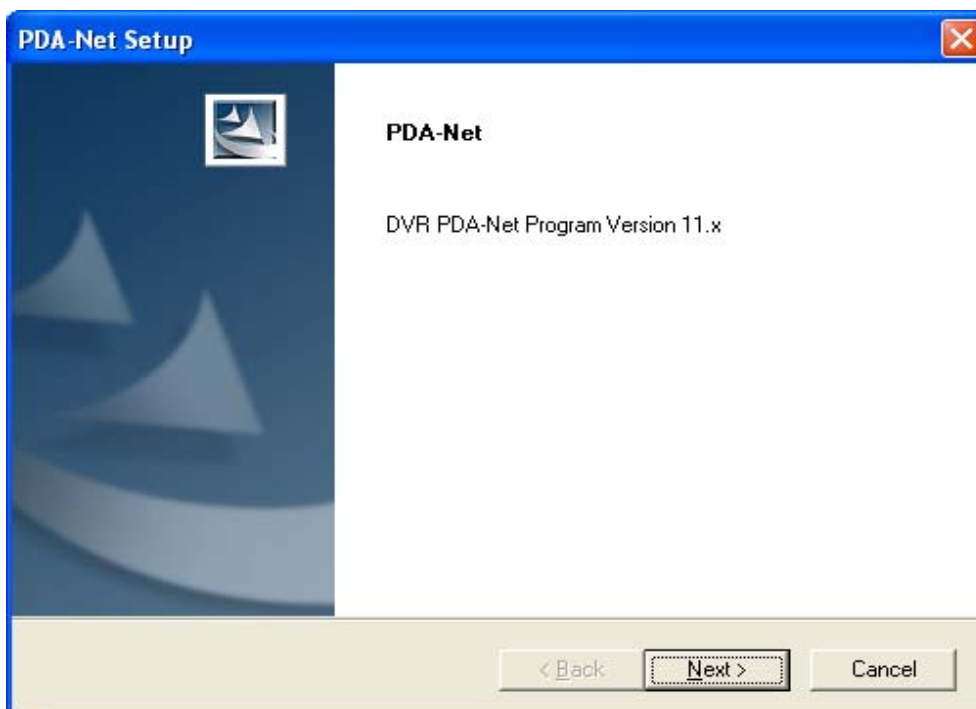
- This manual is based on the PDAs with Windows Mobile 5.0.

2. PDA Net Installation

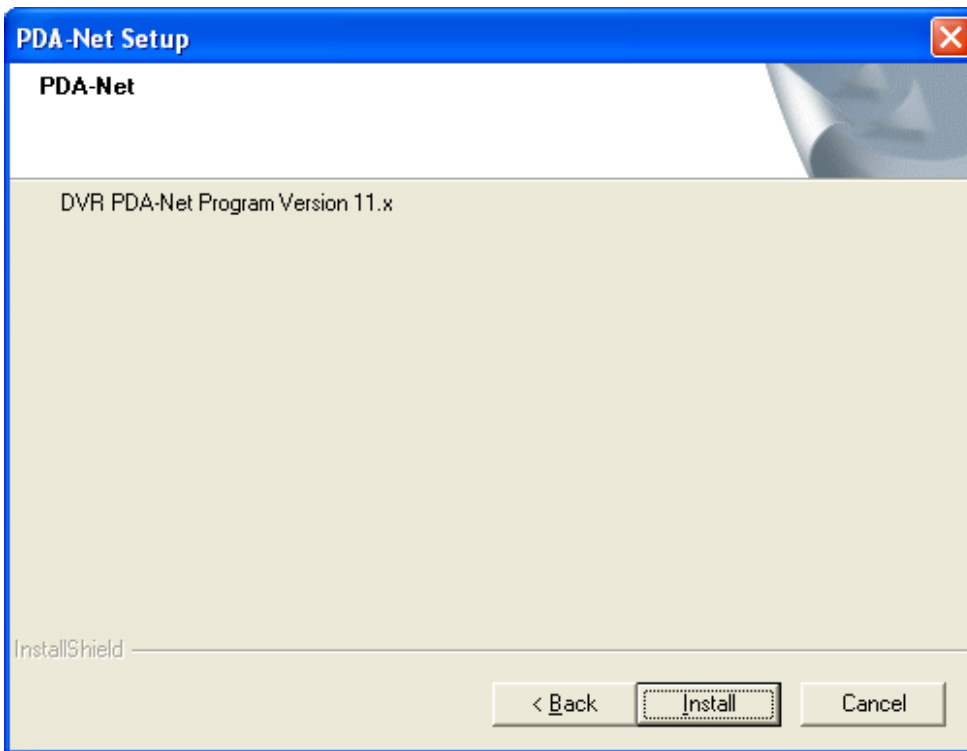
1, Install the PDA-Net on the PC where the PDA is currently connected to.



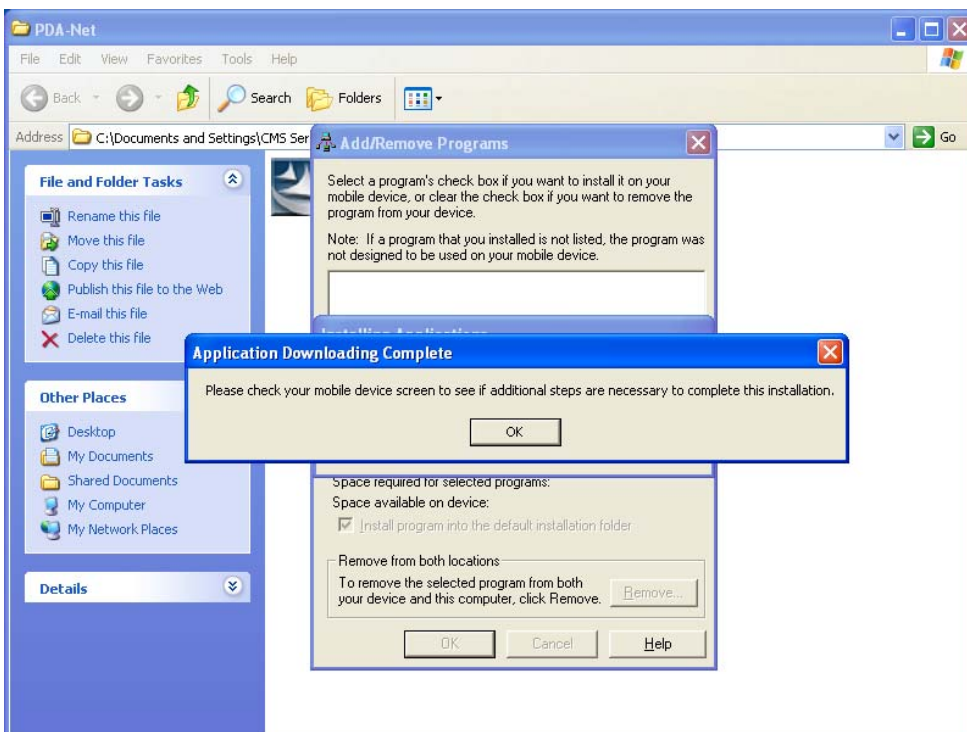
Execute 'PDA-Net'



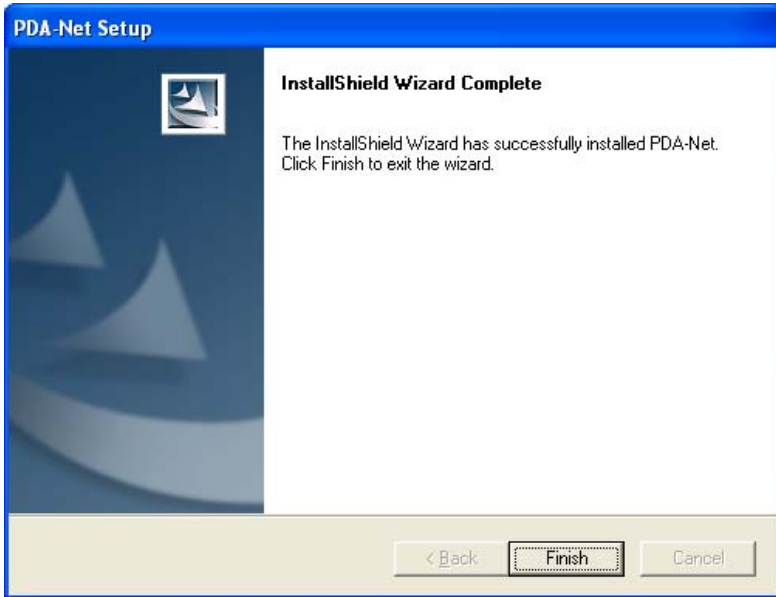
Click on 'Next' button.



Click on 'Install' button.



Click on 'OK' button.

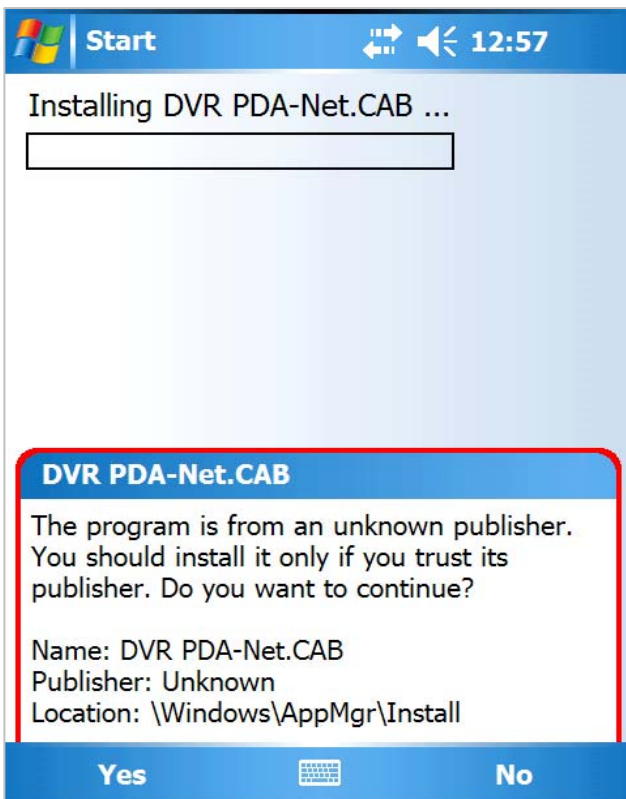


Click on 'Finish' to finish the installation.

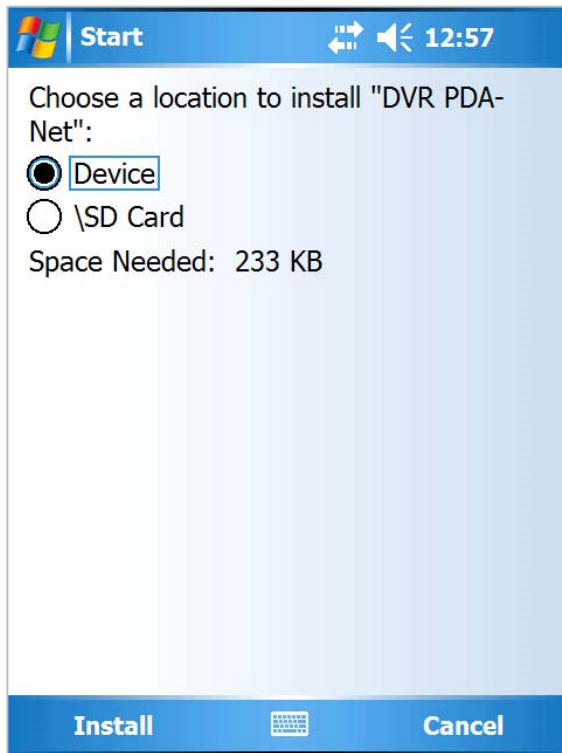
Check the PDA screen.

The following message might appear on the PDA screen.

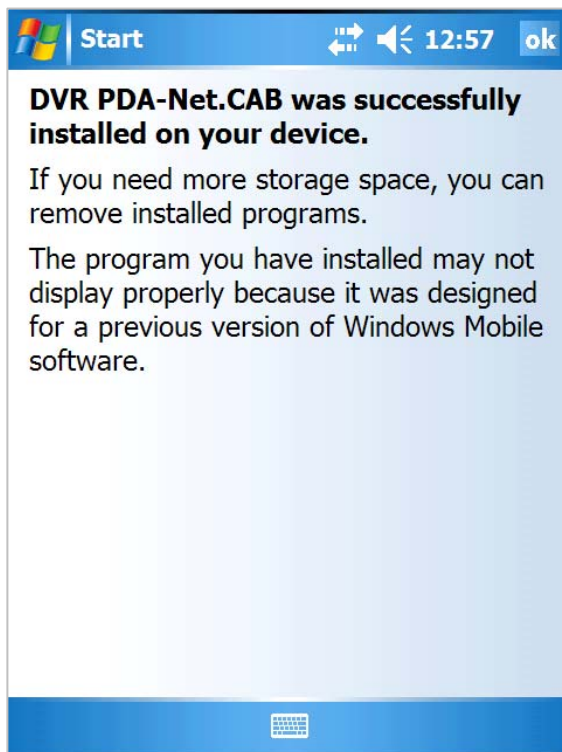
Note: It might look different depending on the version of OS installed on the PDA



Click on 'Yes' button



Select 'Device' and click on 'Install' button



Click on 'Ok' button located on the upper right corner of PDA screen to finish the installation process.

3. PDA Net Connection and Login

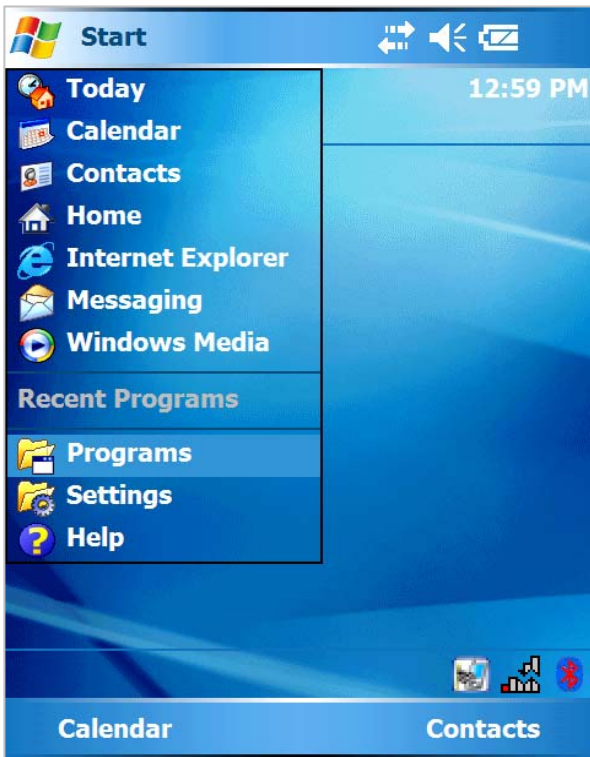
Prior to establishing connection with PDA-Net, there is a need to check whether the PDA is currently connected to the network. PDA might not be connected to Internet by default.

If the network is properly configured, Internet Explorer will be able to display contents from Internet as below.

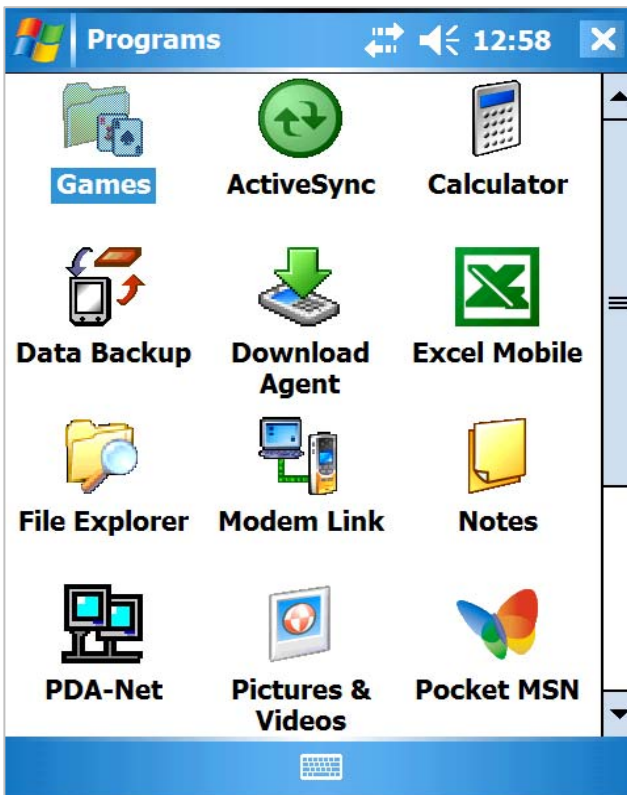


If it still fails to display contents from Internet, please refer to the corresponding PDA manual and establish connection to Internet prior to running PDA-Net.

Run PDA-Net if the PDA is properly connected to the network.



Click on Start → Programs



Execute PDA-Net

If PDA-Net is properly installed, the following screen will appear.

DPNet 12:58 ok

Address

User

Password

Port

116240 1

Login Exit

Enter appropriate information and click on 'Login' button.

DPNet 1:00 ok

Address

74.164.60.98

User

admin

Password

Port

3000 3009

Login Exit

Address : Enter the IP address of the corresponding DVR.

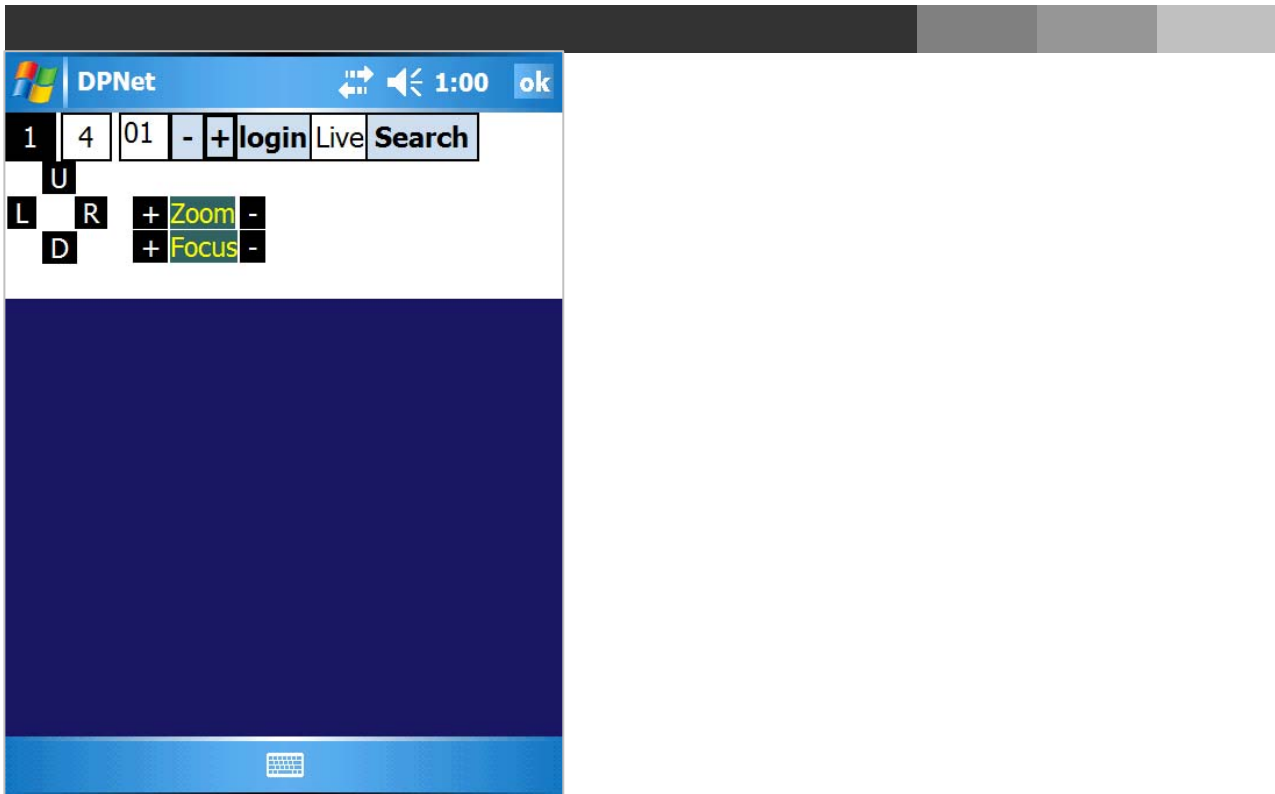
User : Enter a valid user ID.

Password : Enter the password.

Port : Enter 3000 and 300J.

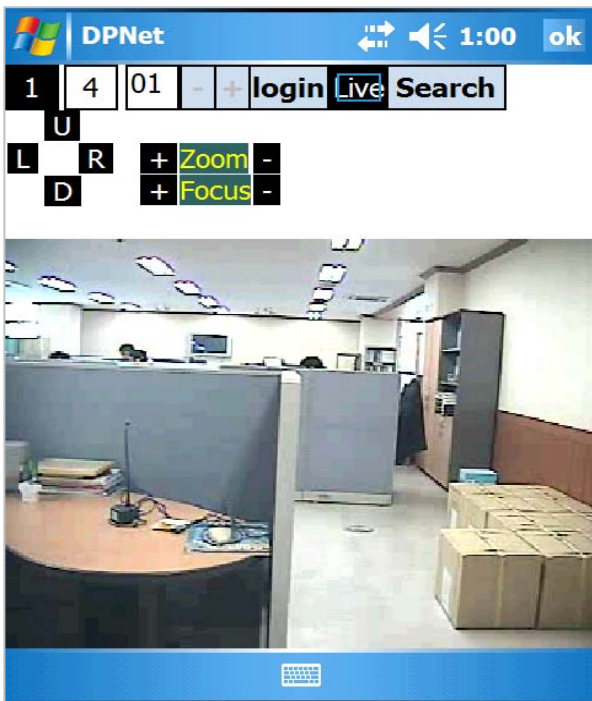
- If the port numbers of the DVR system have been modified, enter the corresponding port numbers

Click on 'Login' button.



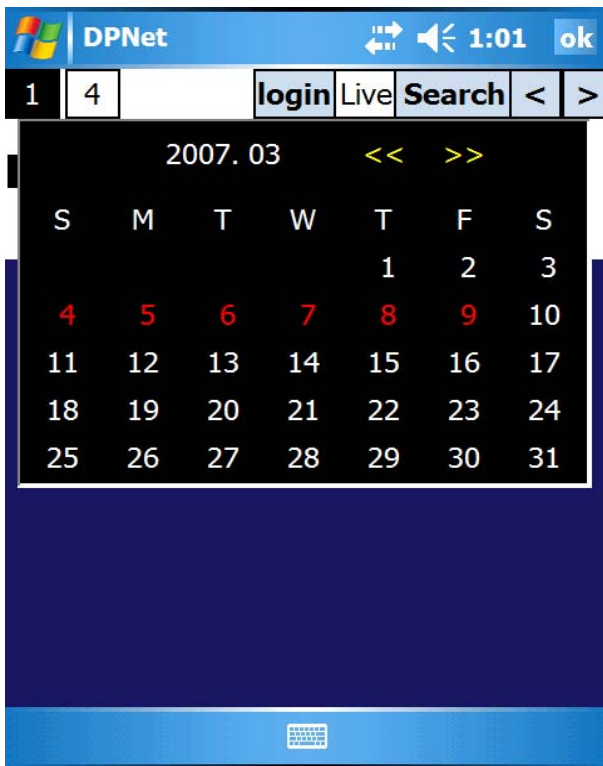
If properly connected, the PDA-Net will appear under “Stand By” mode as above.

Monitoring

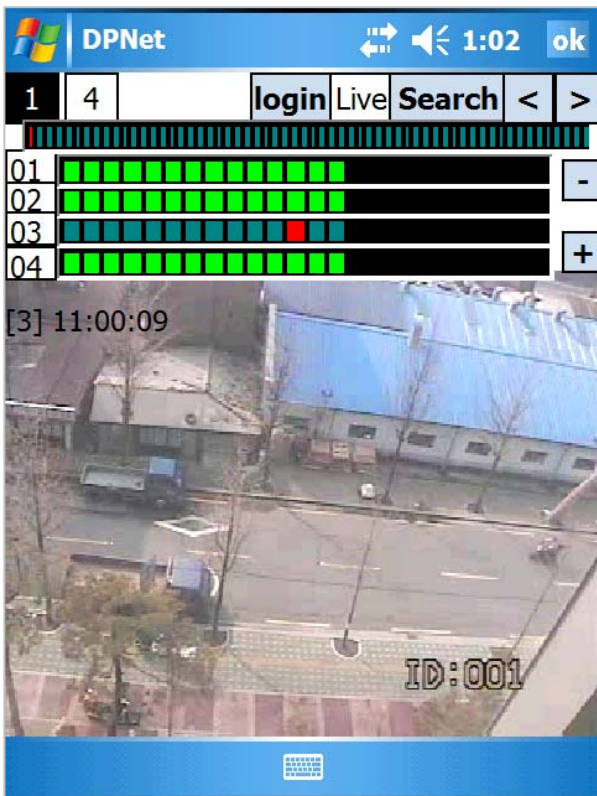


Click on 'Live' button to display the images of the DVR.

Searching



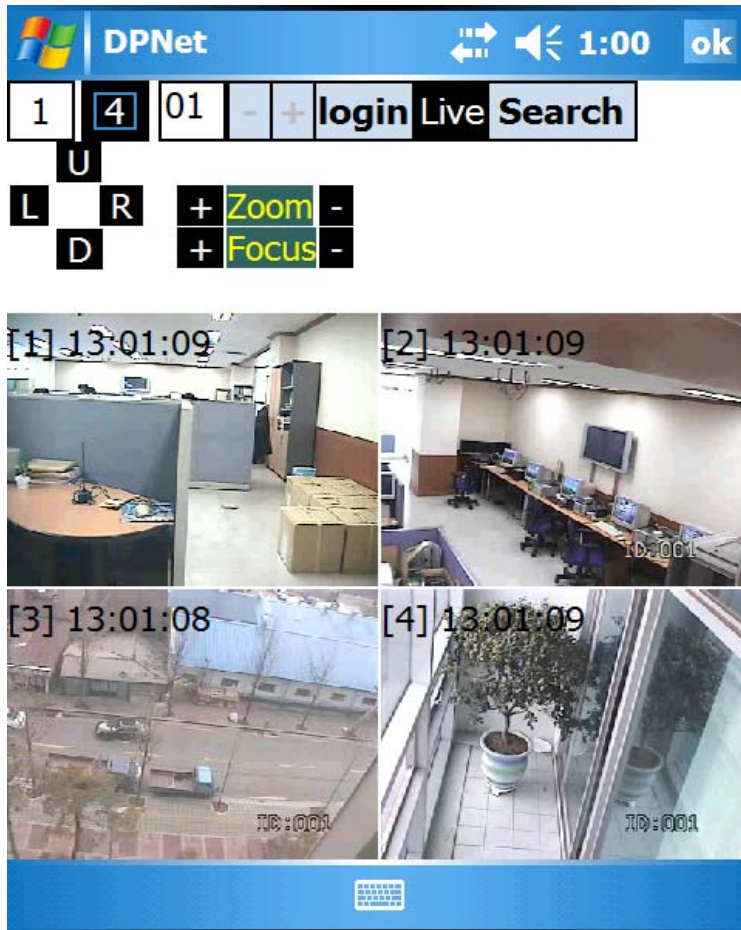
Click on "Search" button to open up the calendar as above and select the desired date.



Select the desired time, and click on '>' button to play the video.

4. PDA Net Screen Configuration & Description

4.1 Live Monitoring



1 **4** Screen Partition Selector: Select either a single view or 4 views.

01 Current Channel Indicator: Displays currently selected channel.

- **+** Channel Selector: Press '+' button to increment current channel and '-' to decrement current channel.
Channel cannot be changed while monitoring. Press 'Live' button to inactivate monitoring and then switch to other channel.

login Login button: Click on "Login" button to connect to other DVR system.

Live

Monitoring button: Click this button to start monitoring video.

Search

Search button: Click this button to switch to Search Mode.



PTZ Control buttons

U : Move camera upward.

L : Rotate camera leftward.

R : Rotate camera rightward.

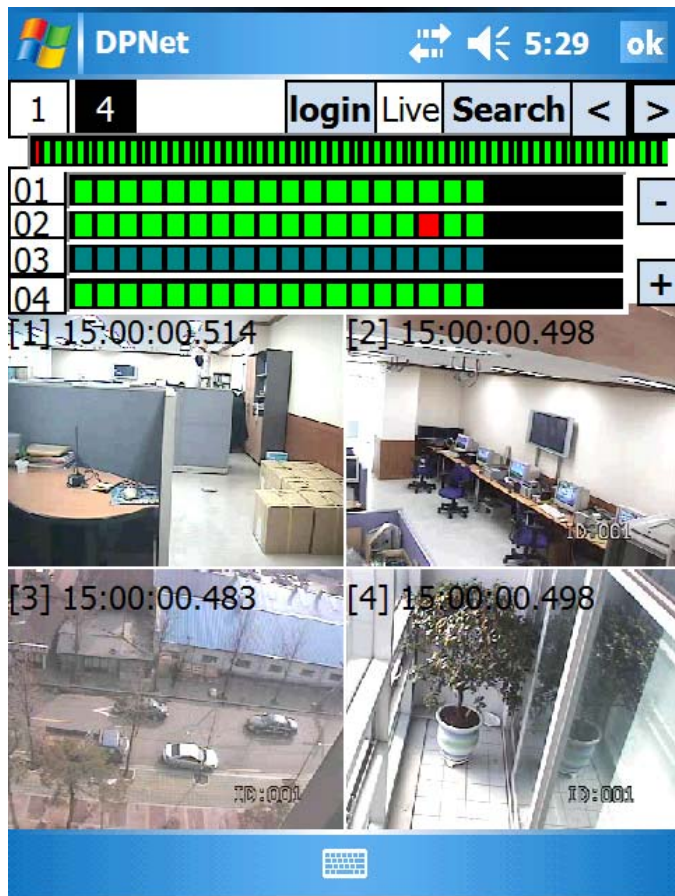
D : Move camera downward.



Zoom button : Adjust the camera zoom.

Focus button : Adjust the camera focus.

PDA Net Search





Screen Partition Selector: Select either a single view or 4 views



Login button: Click on "Login" button to connect to other DVR system



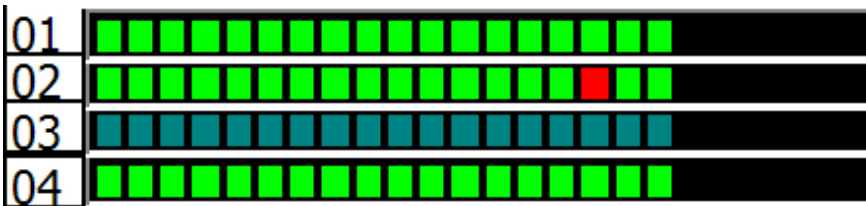
Monitoring button: Click this button to start monitoring video.



Play button: Click to playback the selected video forward or backward.



Minute Selector: Select the minute when the desired video was recorded.



Hour Selector: Select the hour when the desired video was recorded



Channel Selector: Select a camera channel.

